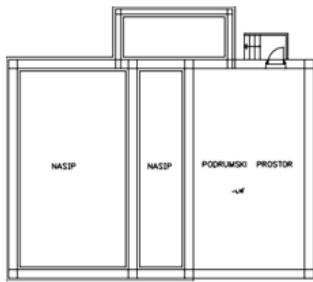


ab forum

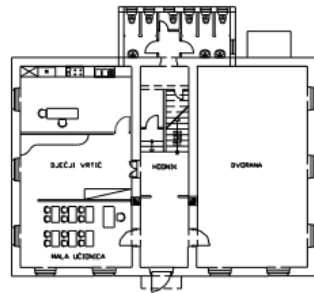
AB FORUM d.o.o.
Plemića Borelli 1,
Zadar

IDEJNI PROJEKT - OSNOVNA ŠKOLA SALI

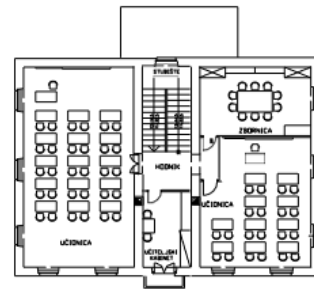




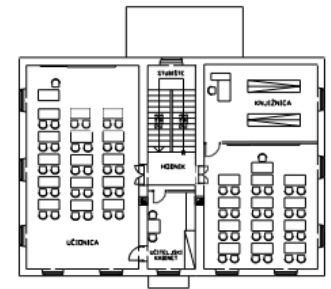
podrum



prizemlje

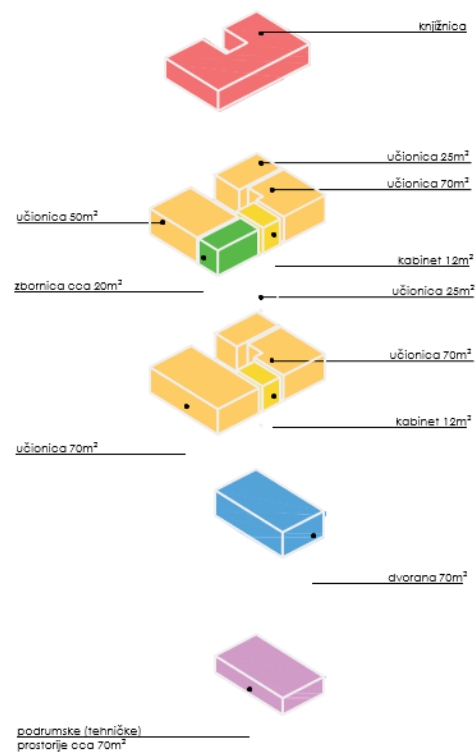


prvi kat

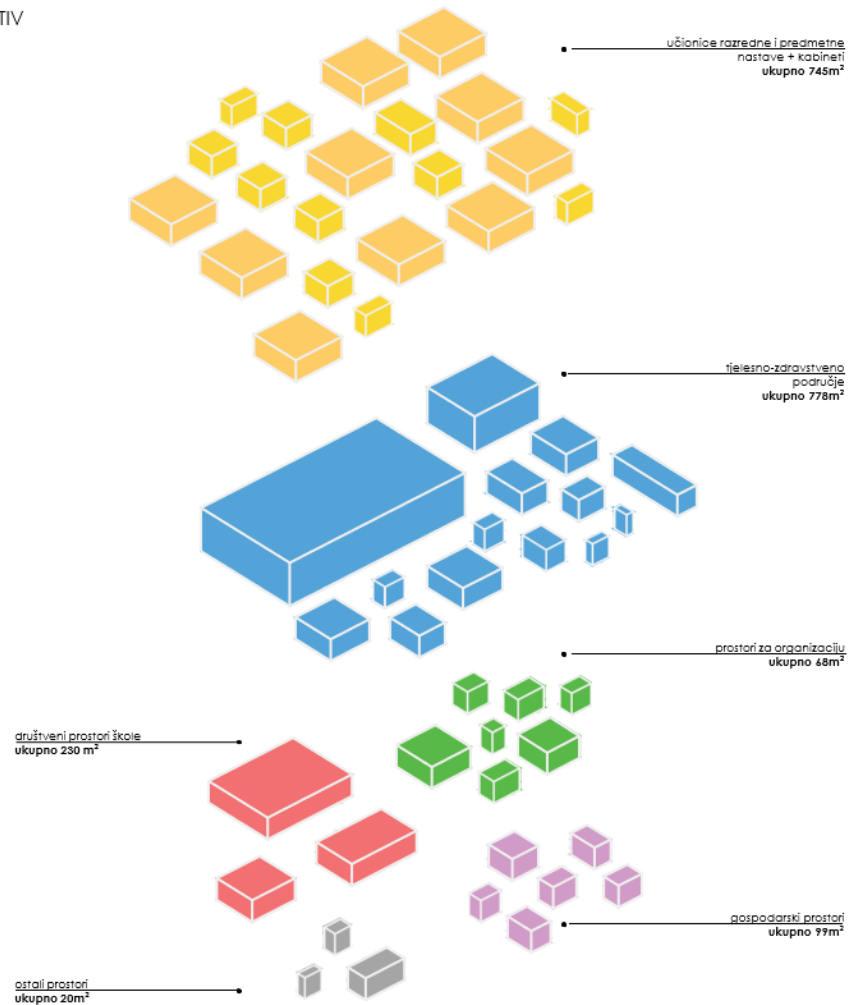


drugi kat

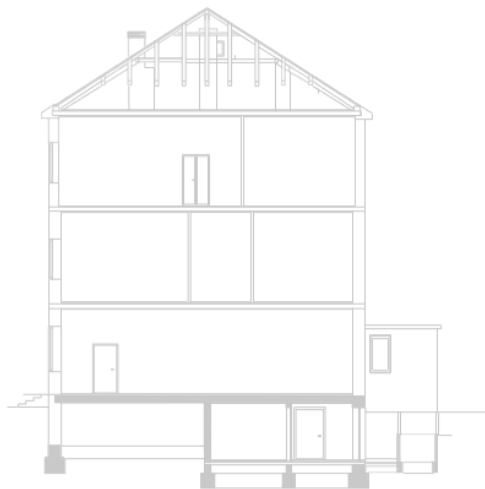
POSTOJEĆE STANJE



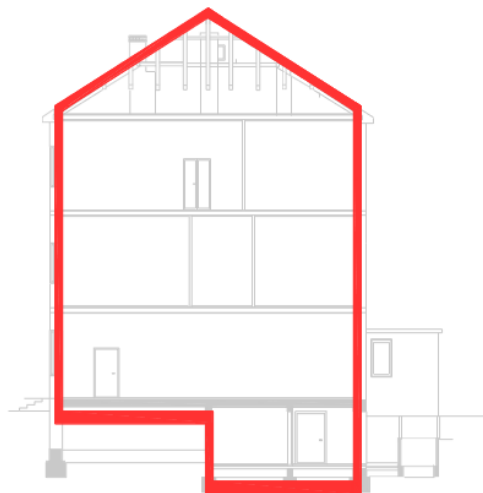
NORMATIV



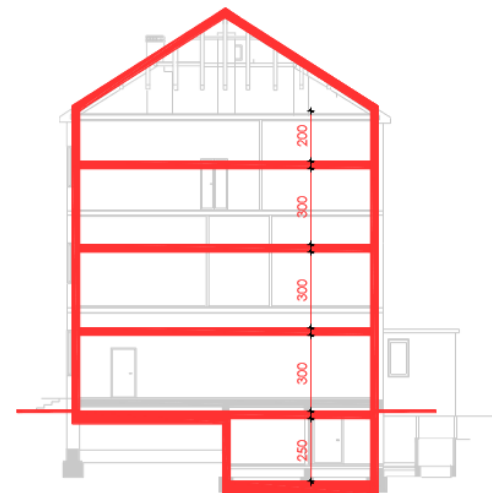
POSTOJEĆI PRESJEK



ZADRŽAVANJE OVOJNICE



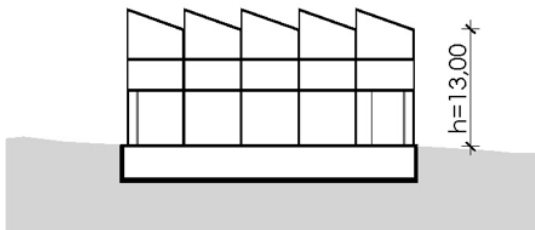
NOVE ETAŽE





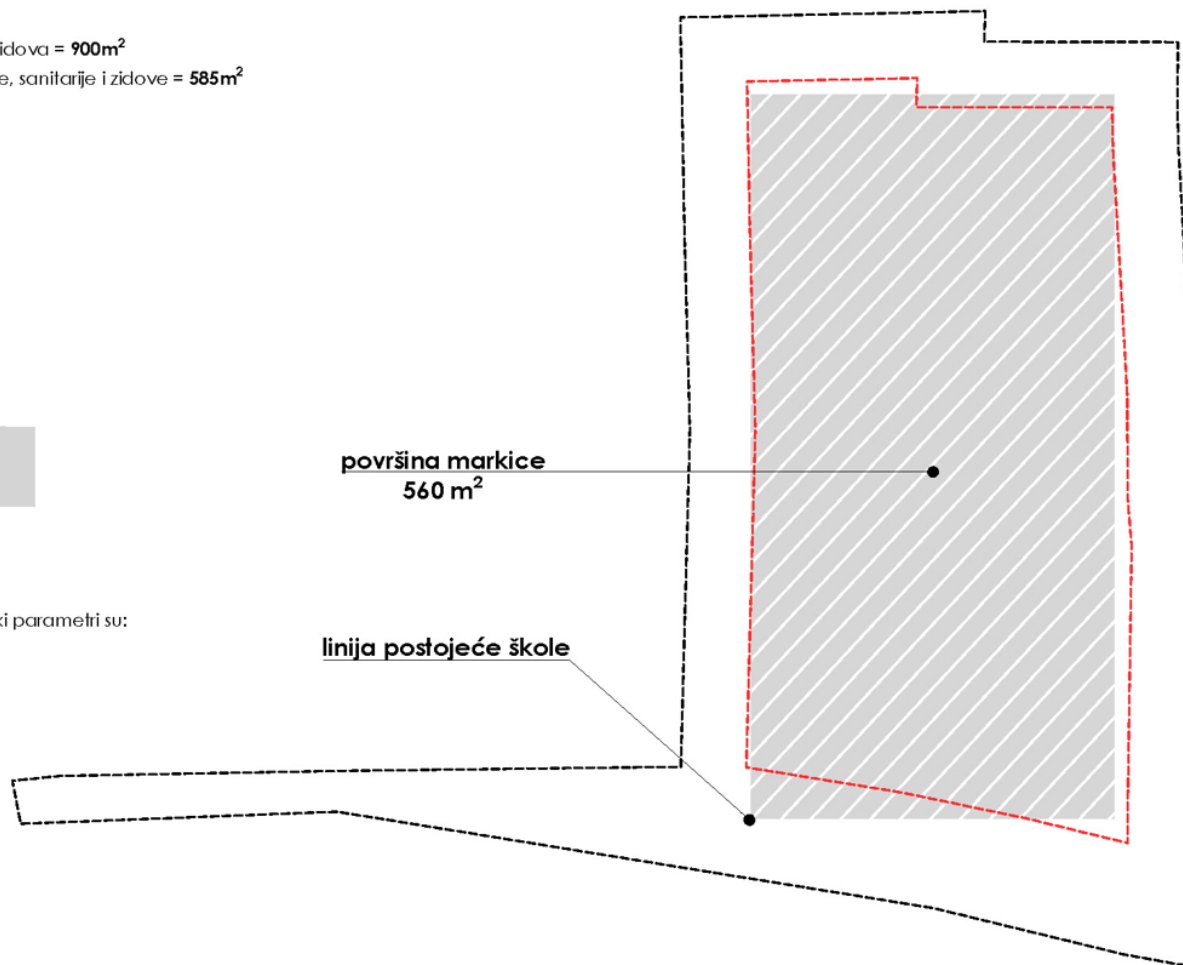
Normativ:

- neto površina bez PVN-a, komunikacija, sanitarija i zidova = **900m²**
- dodatak od 65% neto površine za PVN, komunikacije, sanitarije i zidove = **585m²**
- **bruto površina (bez dvorane) = 1485m²**
- **bruto površina (s dvoranom) = 2385m²**



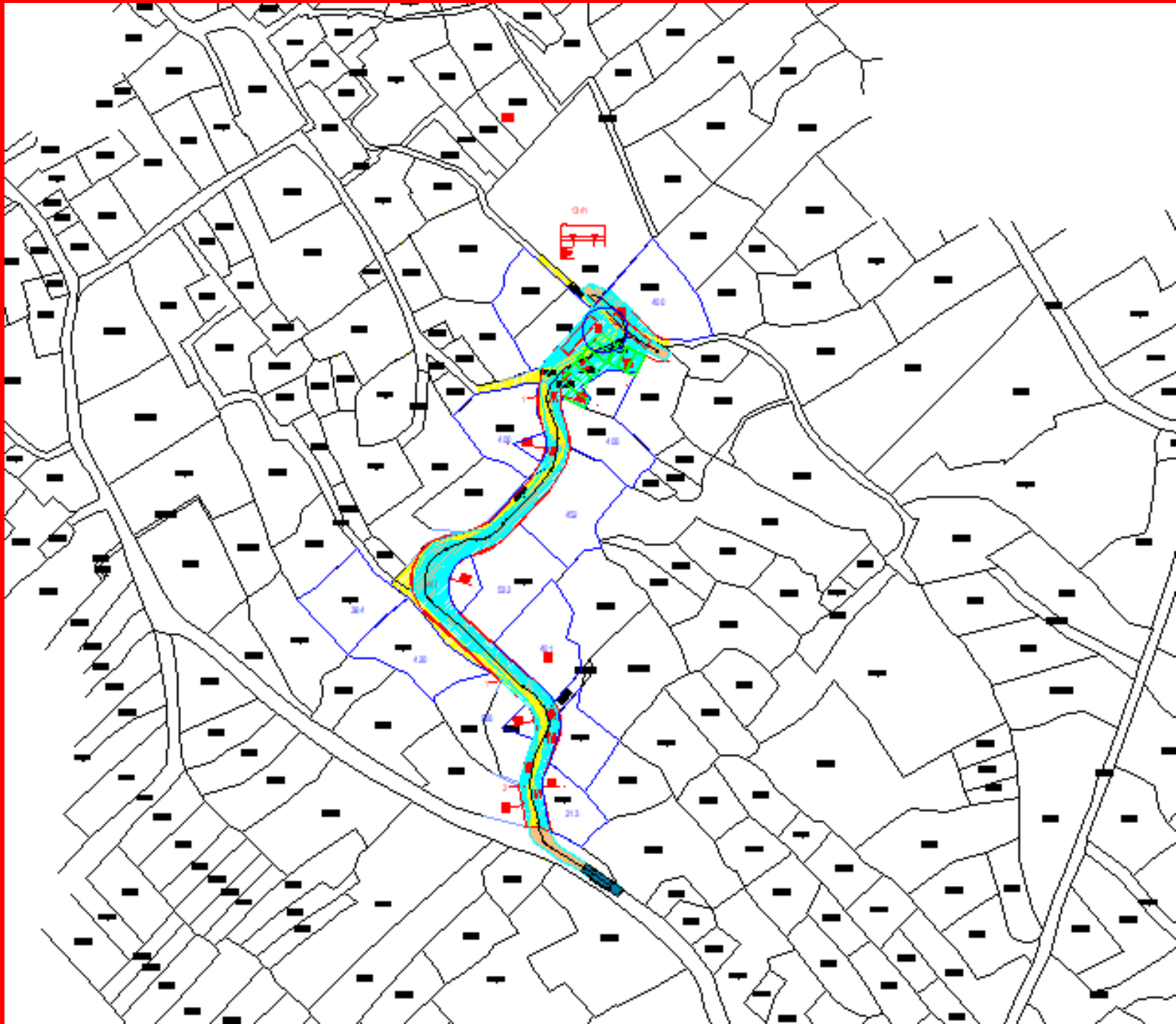
Prema važećem prostornom planu dozvoljeni urbanistički parametri su:

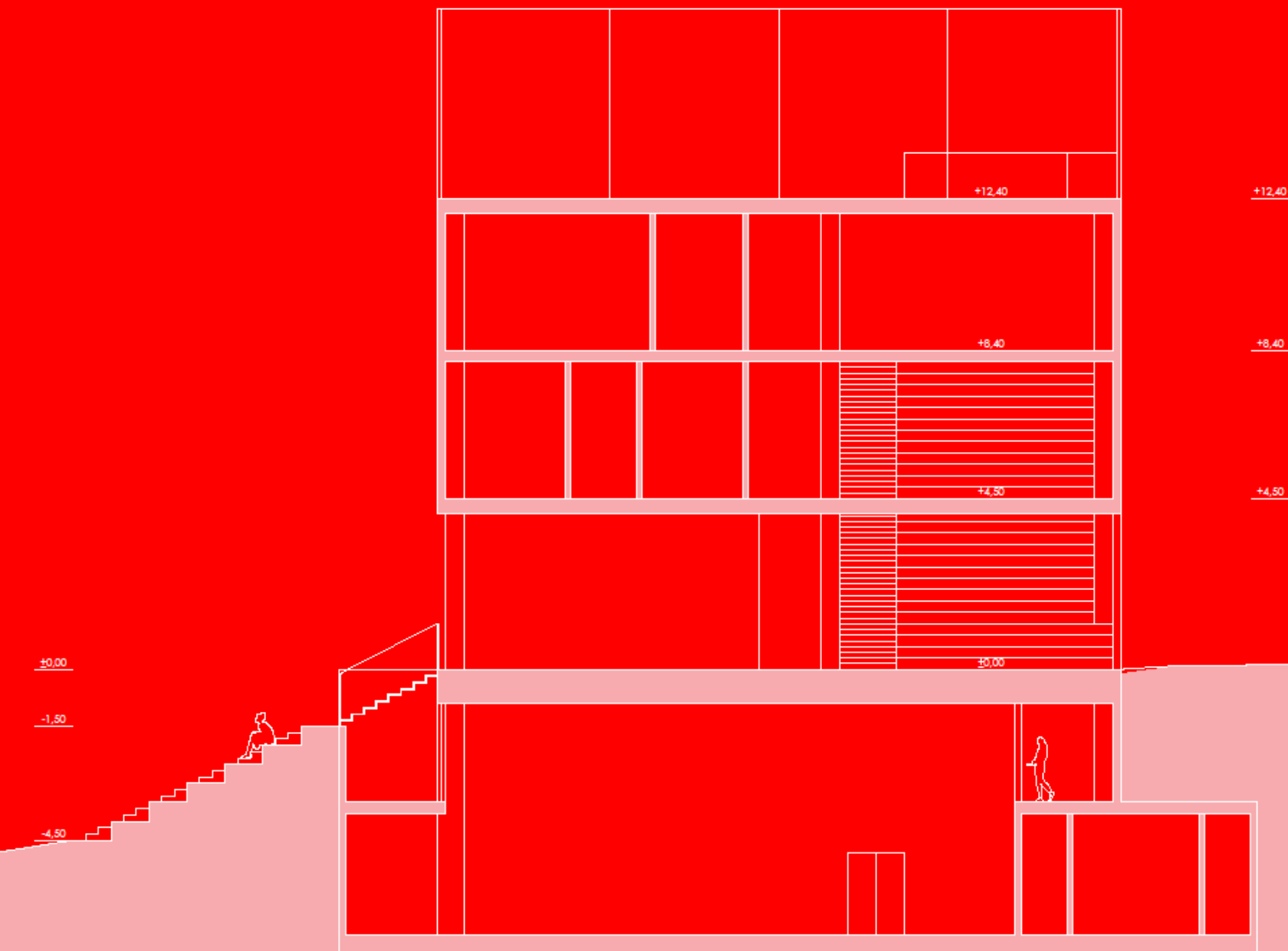
- **max visina objekta = 10m**
- **$k_{g_{max}} = 0,4$**
- **$k_{s_{max}} = 1$**



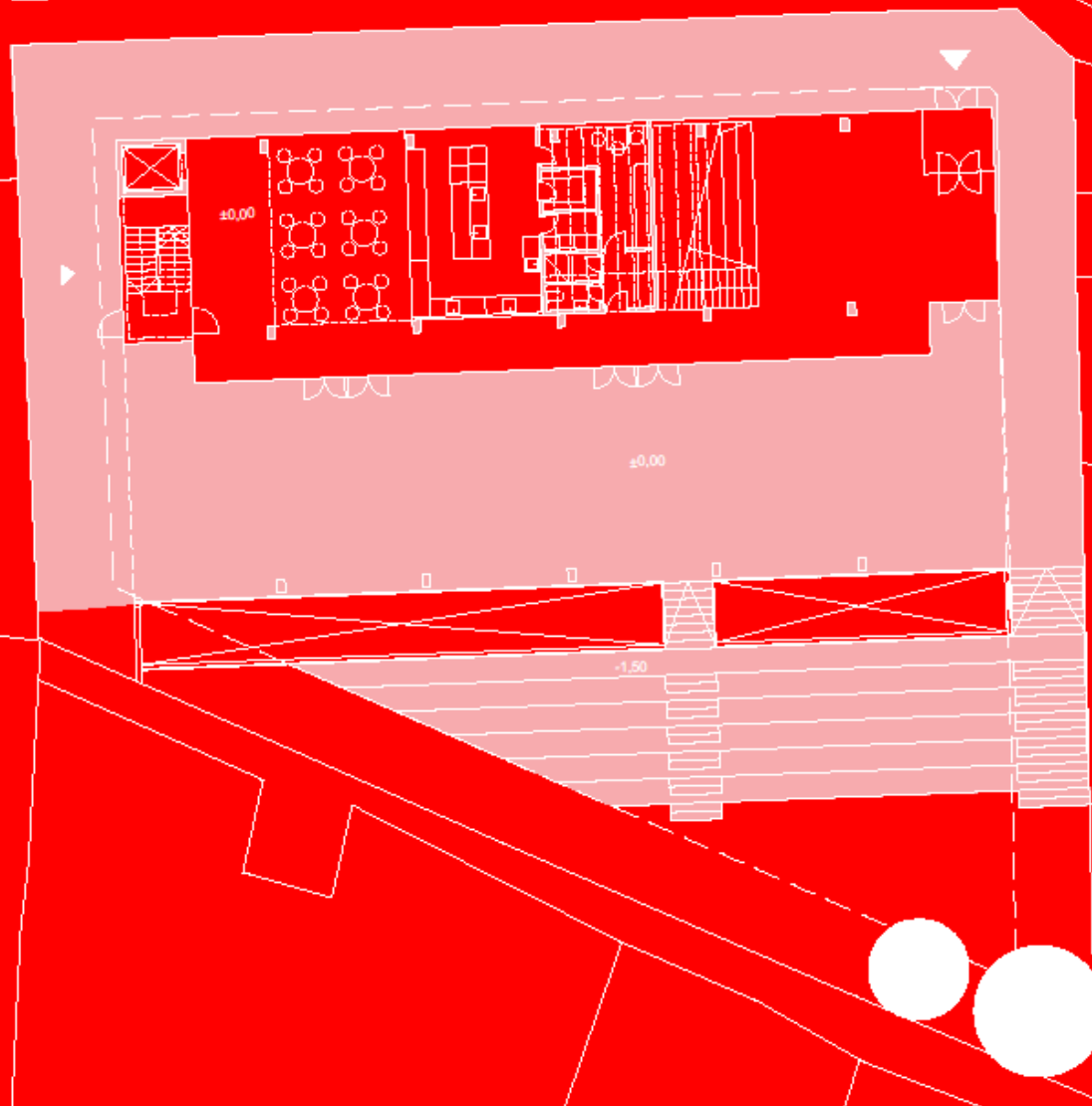




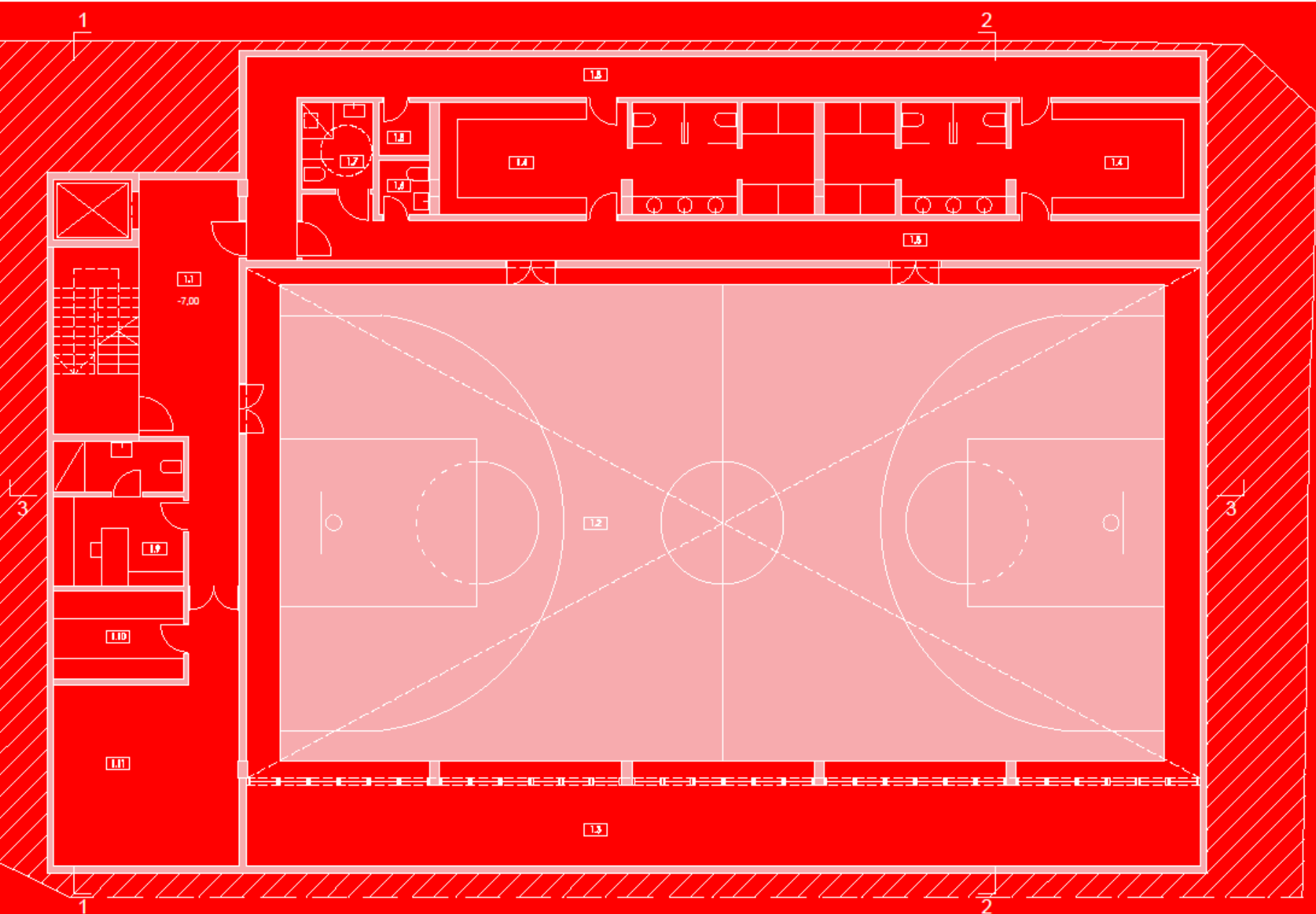




M 1:100
PRESJEK 2-2



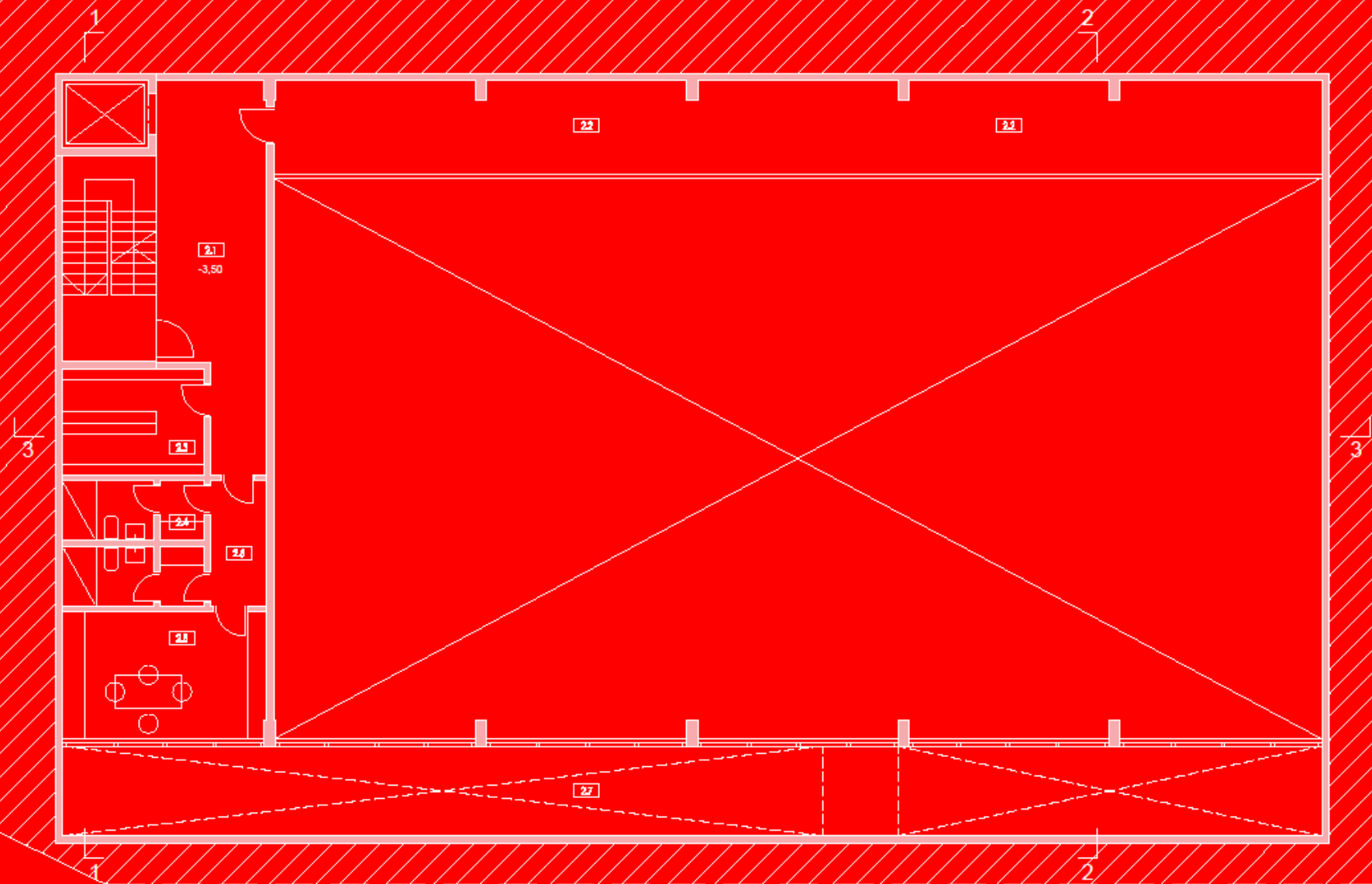
⊗ M 1:
SITUACIJA PRIZEM



- | | | |
|-------------------------------|---------------|--|
| 1.1 pretpostor/hodnik | 1.5 spremište | 1.9 kabinet nastavnika sa sanitarijama |
| 1.2 dvorana za tjelesni odgoj | 1.6 wc | 1.10 radionica kućnog majstora |
| 1.3 spremište sprava i opreme | 1.7 wc | 1.11 kofiolvnica + kondicioniranje zraka |
| 1.4 praonice i svlačionice | 1.8 hodnici | |

M 1:100

TLOCRT - DRUGA PODZEMNA RAZINA

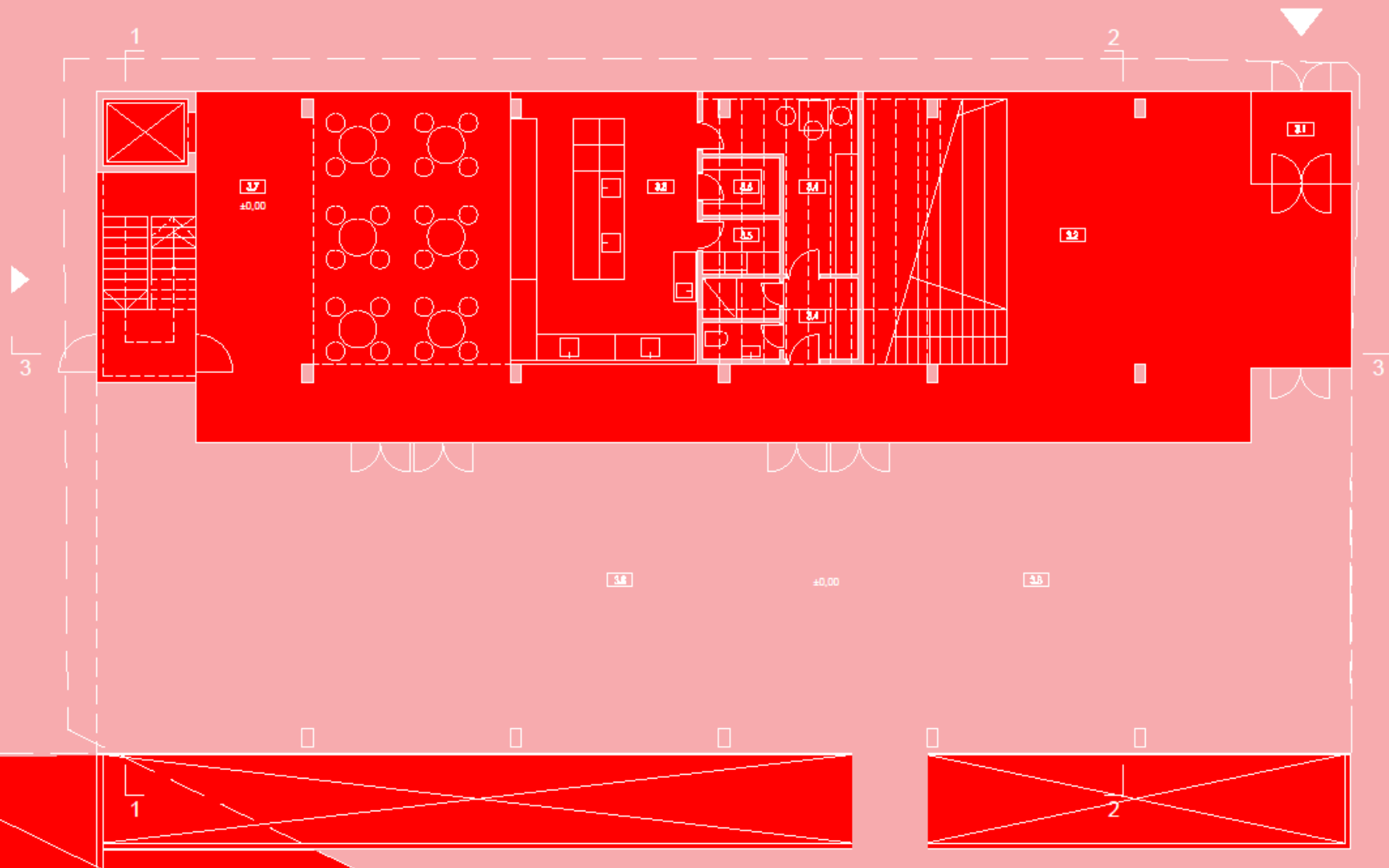


- | | |
|-----------------------------------|--------------------------------|
| 2.1 pretprostor/hodnik | 2.5 tehničko osoblje - boravak |
| 2.2 galerija | 2.6 hodnik |
| 2.3 arhiva | 2.7 svjetlik |
| 2.4 tehničko osoblje - sanitarije | |

M 1:100

TLOCRT - PRVA PODZEMNA RAZINA





- | | |
|-----------------------|----------------------------|
| 3.1 vjetrobran | 3.5 spremište |
| 3.2 PVN | 3.6 rashladna komora |
| 3.3 kuhinja | 3.7 blagovaonica |
| 3.4 kuhinjsko osoblje | 3.8 natkriveni školski trg |

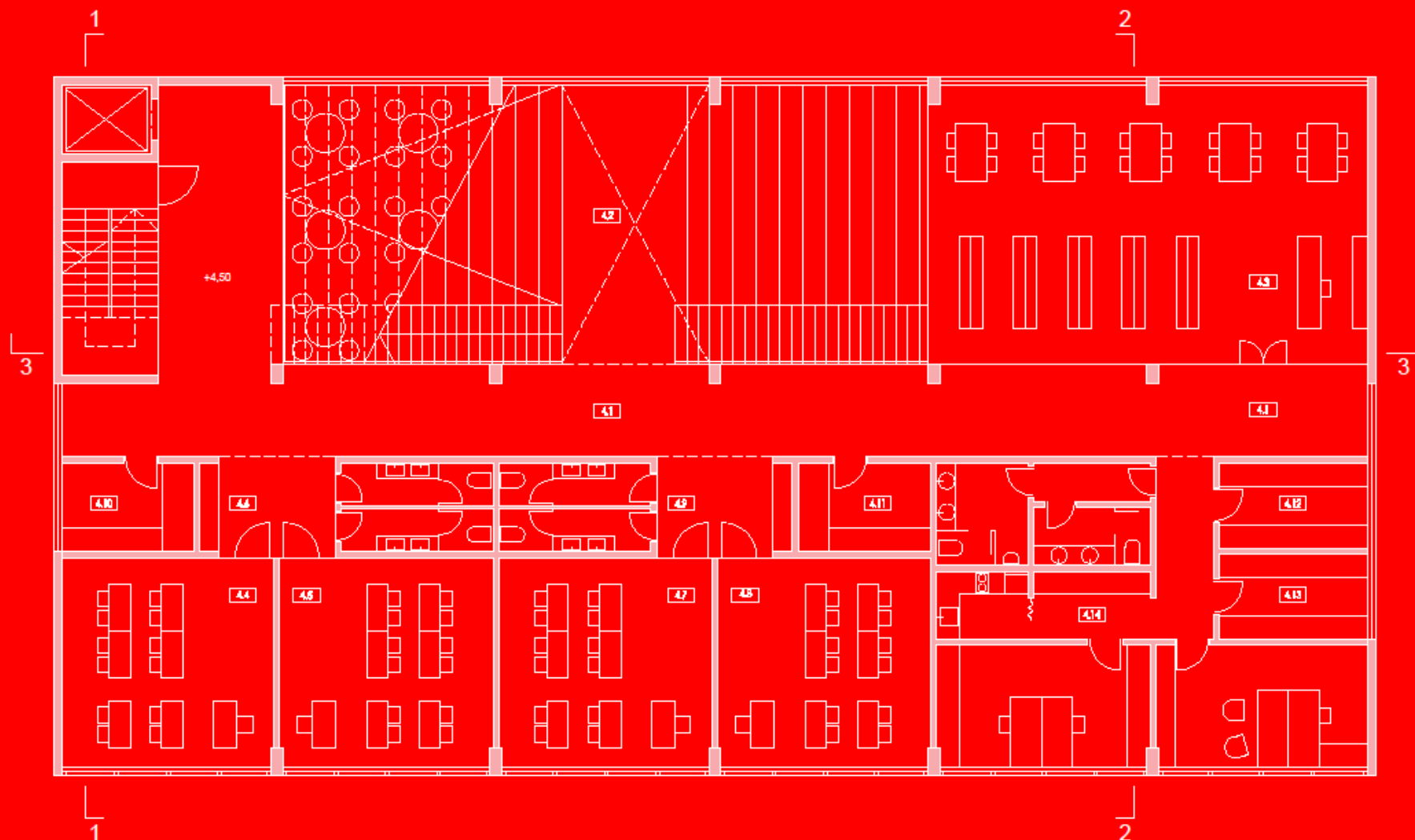
M 1:100

TLOCRT - PRIZEMLJE

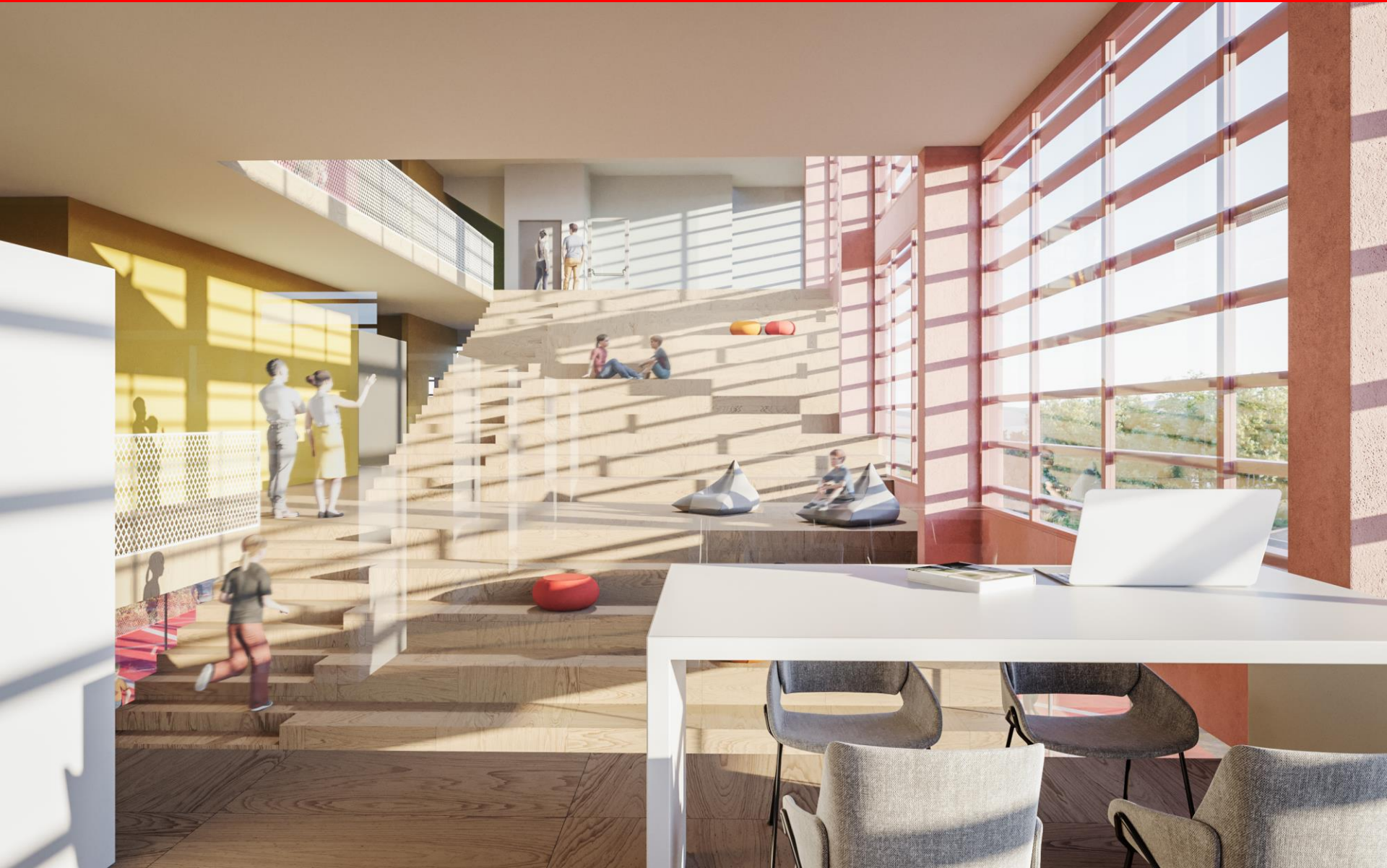








- | | |
|-------------------------------|---|
| 4.1 komunikacija | 4.8 učionica razredne nastave |
| 4.2 PVN | 4.9 sanitarije + garderoba |
| 4.3 BIC | 4.10 kabinet |
| 4.4 učionica razredne nastave | 4.11 spremište |
| 4.5 učionica razredne nastave | 4.12 kabinet |
| 4.6 sanitarije + garderoba | 4.13 kabinet |
| 4.7 učionica razredne nastave | 4.14 administracija sa sanitarijama i čajnom kuhinjom |







PROSTOERNI PRIKAZ - ZAPADNO PROČELJE

